



US 20050057460A1

(19) **United States**(12) **Patent Application Publication****Lee et al.**(10) **Pub. No.: US 2005/0057460 A1**(43) **Pub. Date: Mar. 17, 2005**(54) **ORGANIC ELECTROLUMINESCENT  
DISPLAY DEVICE****Publication Classification**(51) **Int. Cl.<sup>7</sup>** ..... **G09G 3/30**(52) **U.S. Cl.** ..... **345/76**(76) Inventors: **Hun-Jung Lee**, Anyang-si (KR);  
**Jae-Bon Koo**, Yongin-si (KR); **Sang-Il  
Park**, Seoul (KR)(57) **ABSTRACT**

Correspondence Address:  
**MCGUIREWOODS, LLP**  
**1750 TYSONS BLVD**  
**SUITE 1800**  
**MCLEAN, VA 22102 (US)**

The present invention relates to an organic electroluminescent display device for preventing a voltage drop and a short between power supply elements by simultaneously forming a reflective film and a power supply element using a low resistance metal. The invention provides an organic electroluminescent display device comprising gate lines, data lines and a power supply element formed on an insulating substrate, a pixel region limited by the gate lines, the data lines and the power supply element, and pixels arranged on the pixel region and comprising of a reflective film and a pixel electrode, wherein the reflective film is formed on the same layer as the power supply element.

(21) Appl. No.: **10/922,915**(22) Filed: **Aug. 23, 2004**(30) **Foreign Application Priority Data**

Aug. 25, 2003 (KR) ..... 2003-58871

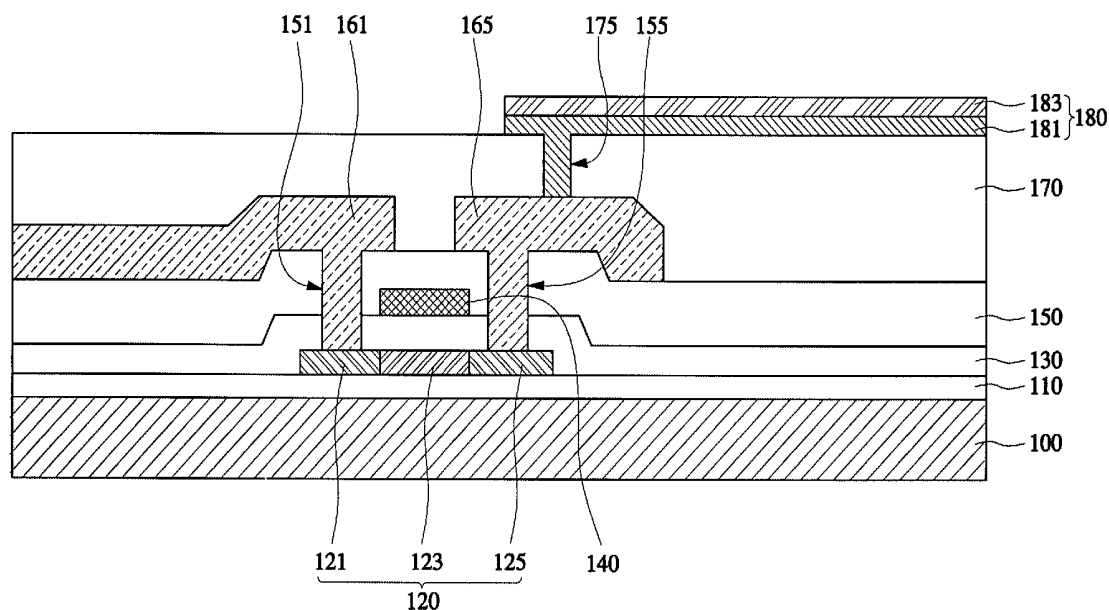


FIG. 1

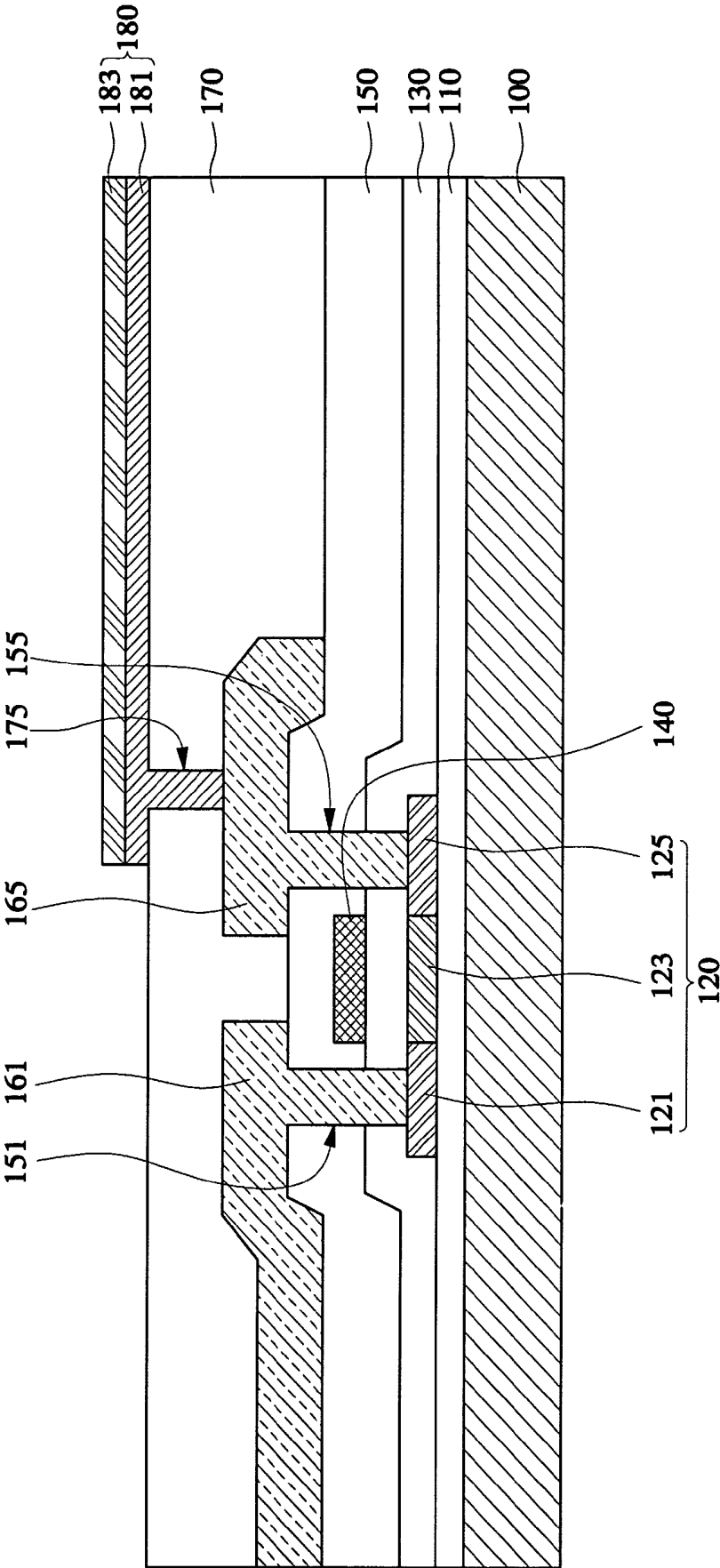


FIG. 2A

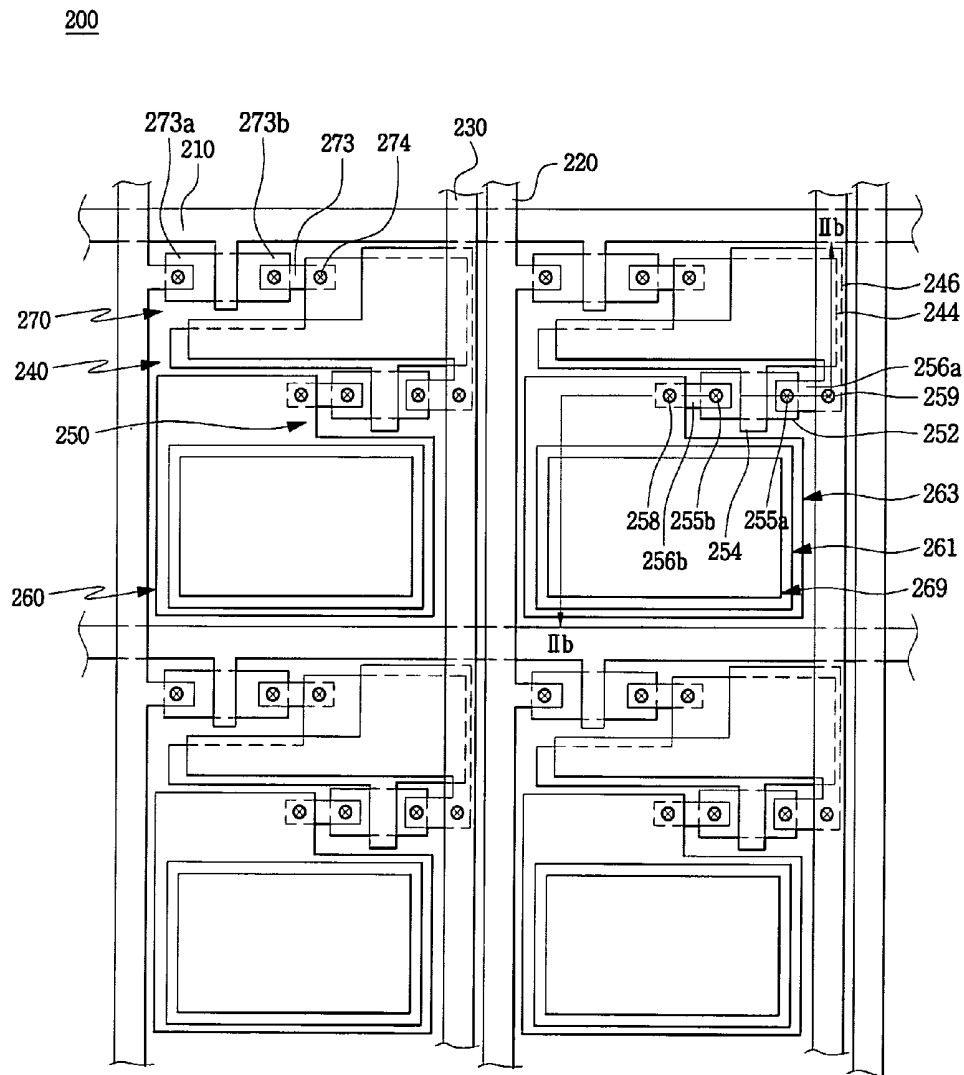


FIG. 2B

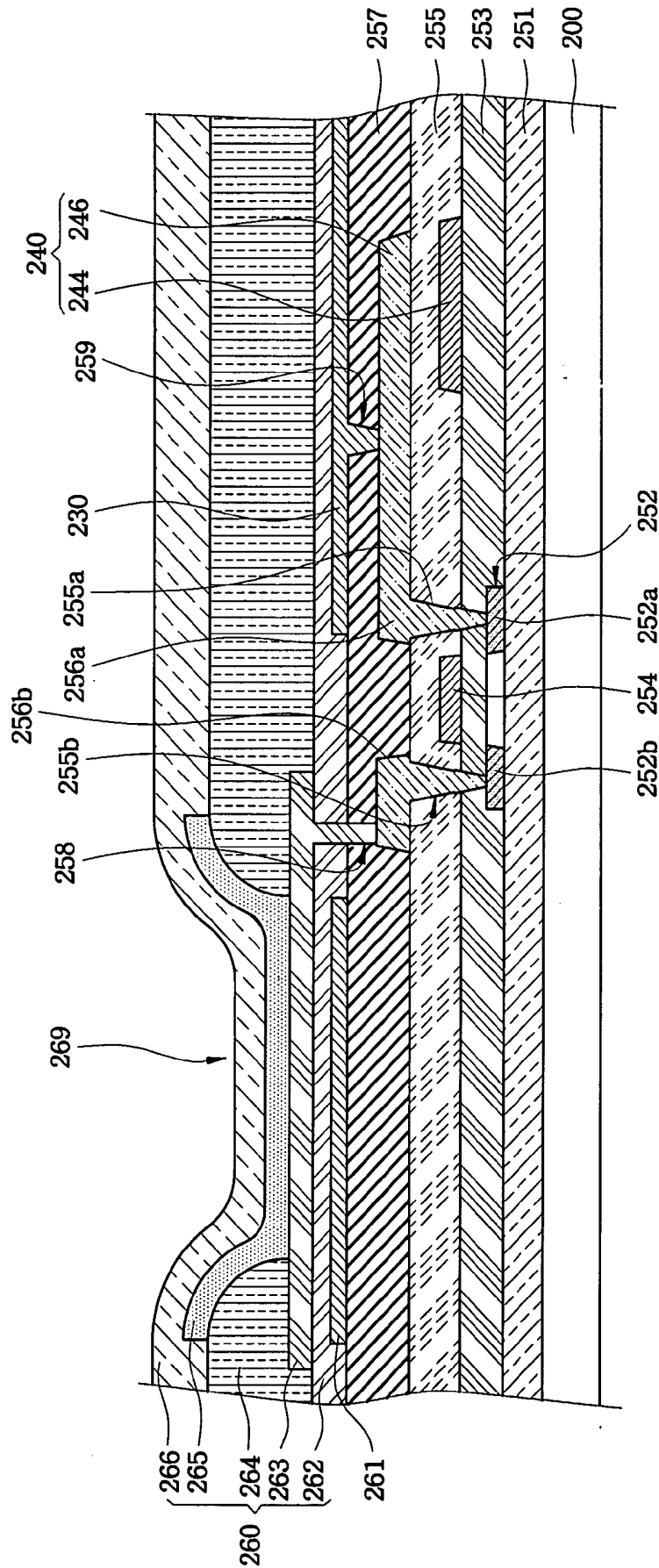


FIG. 3A

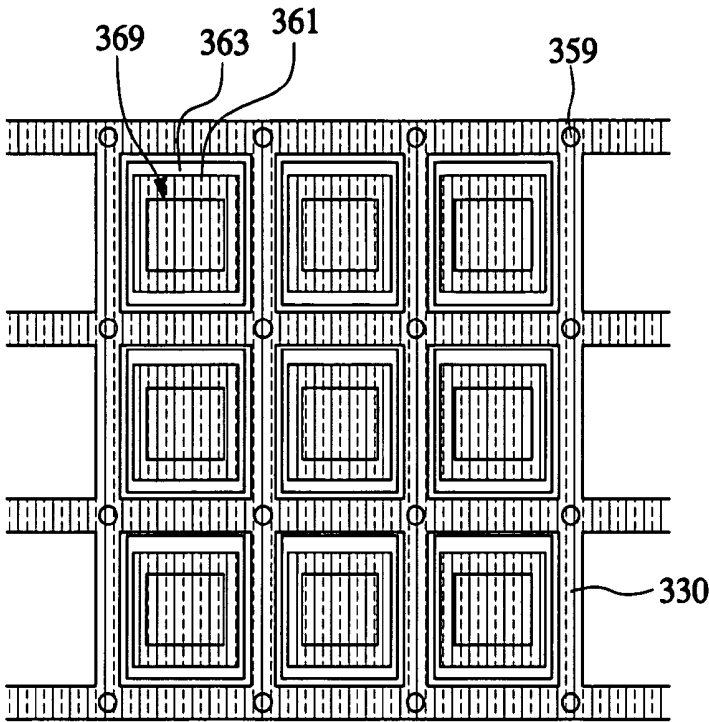


FIG. 3B

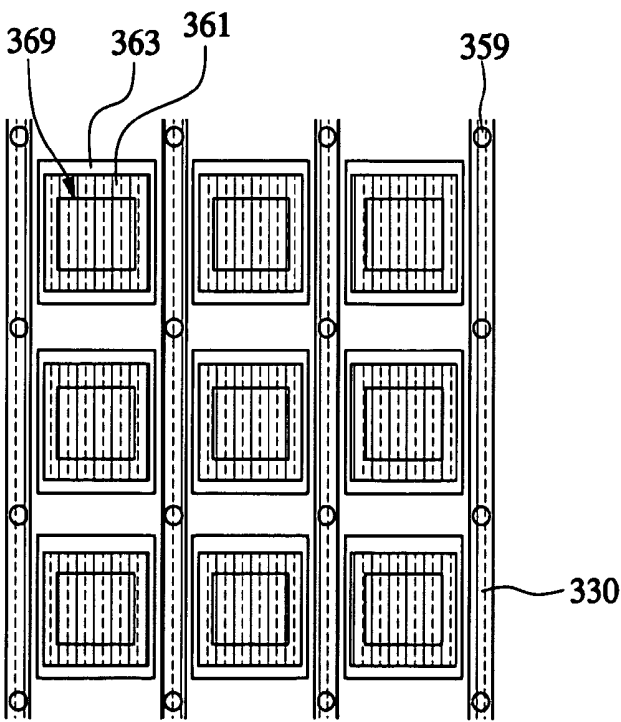


FIG. 3C

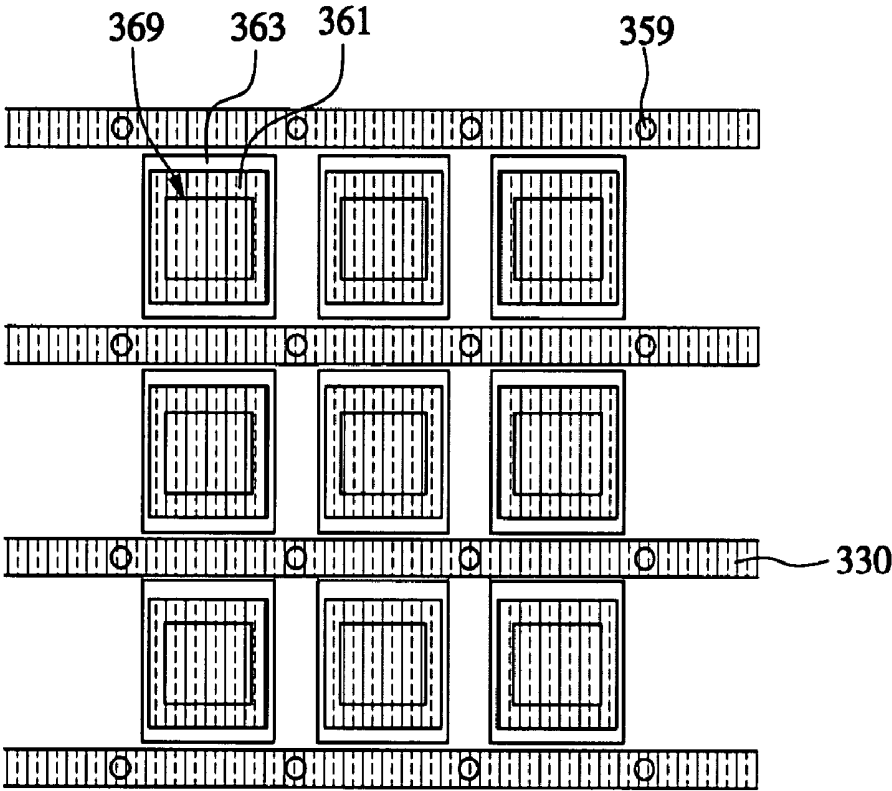


FIG. 4A

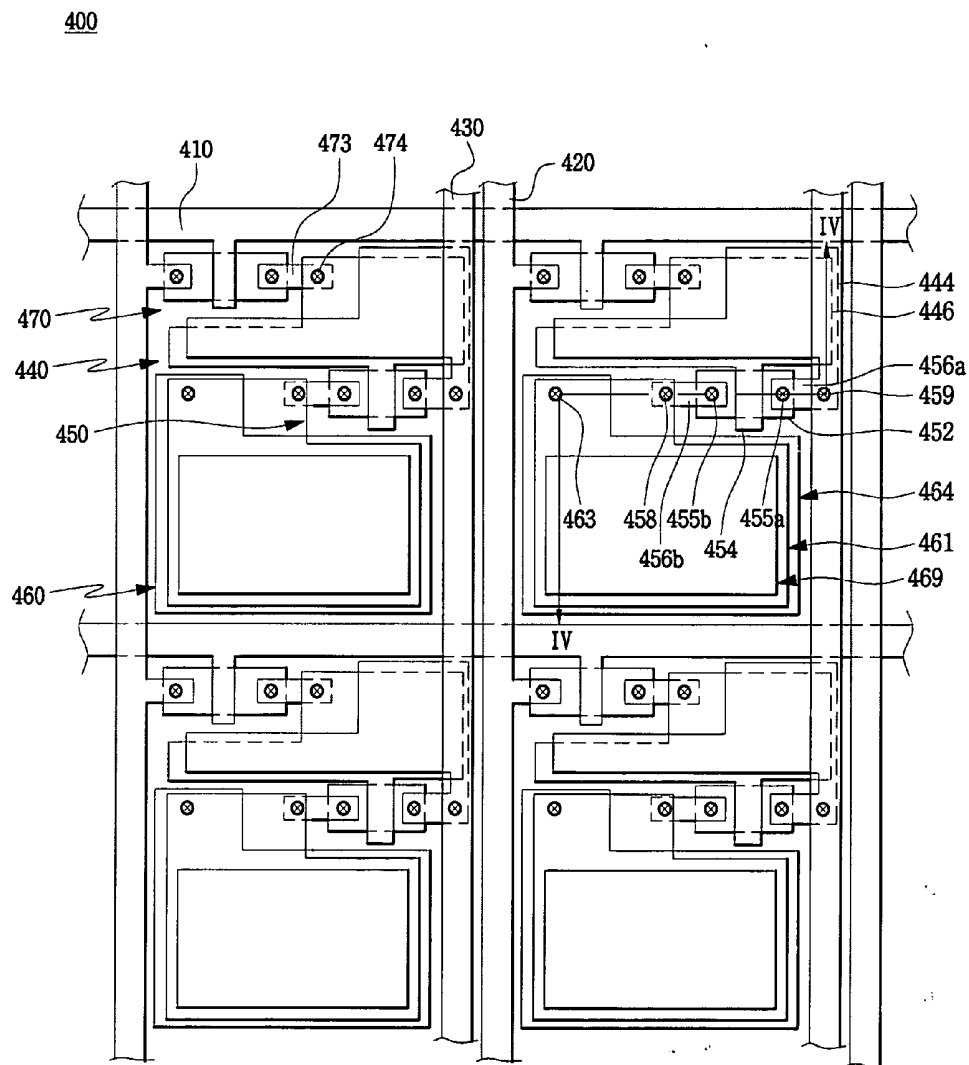


FIG. 4B

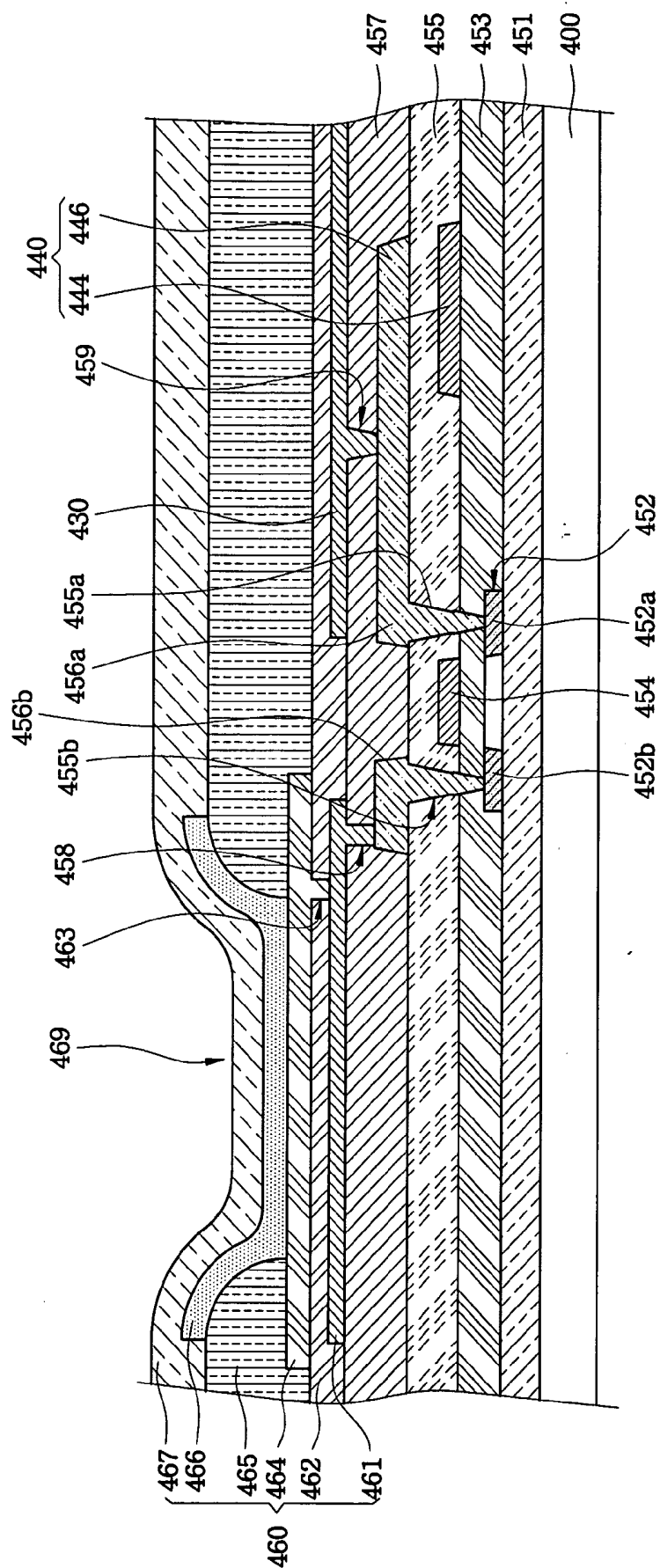




FIG. 5A

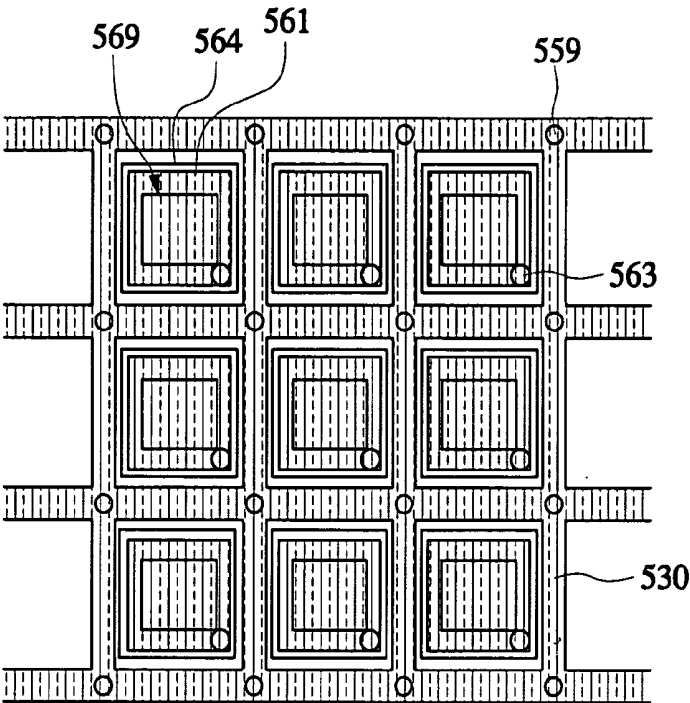


FIG. 5B

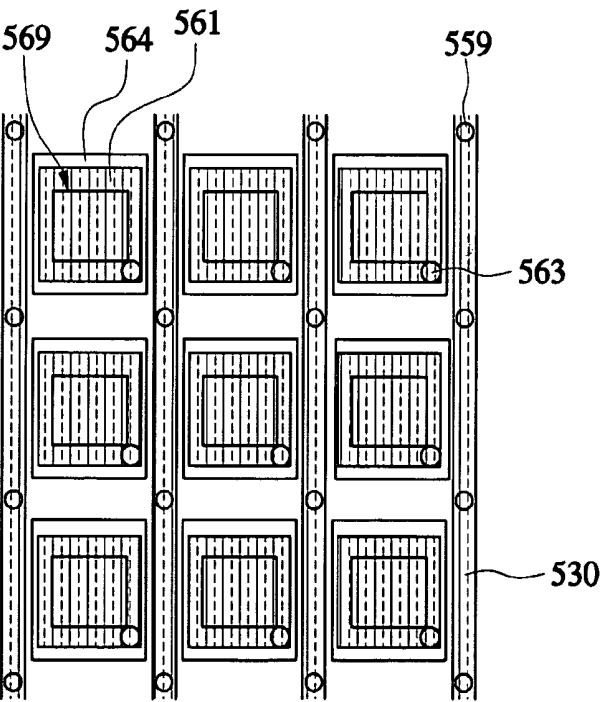
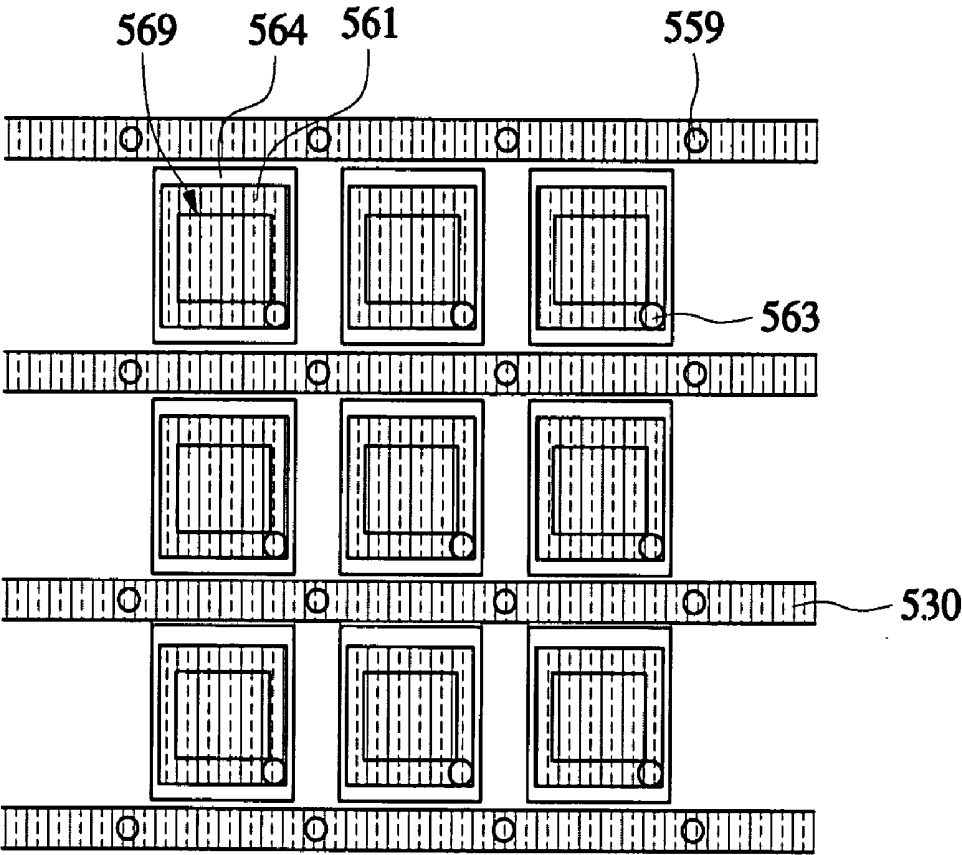


FIG. 5C



## ORGANIC ELECTROLUMINESCENT DISPLAY DEVICE

### CROSS REFERENCE

[0001] This application claims the benefit of Korean Patent Application No. 2003-58871, filed on Aug. 25, 2003, the disclosure of which is incorporated herein by reference in its entirety.

### FIELD OF THE INVENTION

[0002] The present invention relates to an organic electroluminescent display device, and more particularly, to an organic electroluminescent display device for preventing a voltage drop and a short between power supply elements by simultaneously forming a reflective film and a power supply element using a low resistance metal.

### BACKGROUND OF THE INVENTION

[0003] Ordinarily, each unit pixel of an active matrix organic electroluminescent display device comprises a switching transistor, a driving transistor, a capacitor and a light emitting element. A common power supply (Vdd) is supplied to the driving transistor and the capacitor from the power supply line. A common power supply should be uniformly supplied to a plurality of pixels arranged in a matrix form so as to obtain uniform luminance, since the power supply line plays a role in controlling an electric current flowing to the light emitting element through the driving transistor. Referring to the following appended drawings, prior art is now described.

[0004] FIG. 1 is a cross sectional view illustrating a conventional organic electroluminescent display device. Referring to FIG. 1, an activation layer 120, formed of polysilicon, is formed on a buffer layer 110 which is formed on insulating substrate 100.

[0005] Then, a gate electrode 140 is formed by depositing gate insulating layer 130 and gate metal on the front side of the insulating substrate 100 and patterning the gate metal.

[0006] Source region 121 and drain region 125 are formed by doping certain impurities in the activation layer 120 by using a mask after forming the gate electrode 140. A region between the source region 121 and the drain region 125 in the activation layer 120 functions as a channel region 123.

[0007] Afterward, contact holes 151, 155 for exposing a part of the source region 121 and drain region 125 are formed by depositing an interlayer insulating layer 150 on the source region 121 and drain region 125 and patterning the interlayer insulating layer 150. Source and drain electrodes 161, 165 are formed by depositing a metal layer on the front side of the insulating substrate 100 and photolithographing the metal layer. Any one electrode in the source and drain electrodes 161, 165, such as, for example, the source electrode 161, functions as a power supply line.

[0008] A via hole 175 for exposing a part of the drain electrode 165 is formed on the passivation layer 170 after forming a passivation layer 170 on the front side of the insulating substrate 100 including the source and drain electrodes 161, 165.

[0009] An anode electrode 180 consisting of a reflective film 181 and a transparent electrode 183 is formed by

patterning the deposited metal and transparent conductive material after depositing a metal, such as Ag and Al, having a superior reflectivity to that of the insulating substrate 100, on the via hole 175 and depositing a transparent conductive material, such as ITO and IZO, on the deposited metal.

[0010] An organic emitting layer and a cathode electrode are formed afterward, although they are not illustrated on drawings.

[0011] A power supply line is ordinarily formed using source and drain electrodes 161, 165 in the foregoing conventional organic electroluminescent display device. However, the conventional organic electroluminescent display device has problems in that MoW, mainly used as the source and drain electrodes 161, 165, has a high voltage drop (IR drop) due to high resistance, and a short may be generated between adjacent wirings when the source and drain electrodes 161, 165 are used as a power supply line.

### SUMMARY OF THE INVENTION

[0012] Therefore, in order to solve the foregoing problems of the prior art, the present invention provides an organic electroluminescent display device for preventing a voltage drop and a short circuit between power supply elements by simultaneously forming a reflective film and a power supply element using a low resistance metal, and a method for fabricating the same.

[0013] An exemplary embodiment of the invention provides an organic electroluminescent display device comprising gate lines, data lines and a power supply element formed on an insulating substrate, a pixel region confirmed by the gate lines, data lines and the power supply element, and pixels arranged on the pixel region and comprising of at least a reflective film and a pixel electrode, wherein the reflective film is formed on the same layer as the power supply element.

[0014] A further exemplary embodiment of the invention provides an organic electroluminescent display device comprising a thin film transistor formed on an insulating substrate and equipped with a source electrode and a drain electrode, a first insulating layer formed on the insulating substrate and equipped with a contact hole for exposing any one electrode in the source electrode and the drain electrode, a reflective film formed on the first insulating layer, a power supply element formed on the first insulating layer and electrically connected to any one electrode of the source electrode and the drain electrode through the contact hole, a second insulating layer formed on the insulating substrate equipped with the reflective film and the power supply element and equipped with a via hole for exposing another electrode of the source electrode and the drain electrode, and a pixel electrode formed on the second insulating layer and electrically connected to another electrode of the source electrode and the drain electrode through the via hole.

[0015] A further embodiment of the present invention provides an organic electroluminescent display device comprising a thin film transistor formed on an insulating substrate and equipped with source electrode and a drain electrode, a first insulating layer formed on the insulating substrate and equipped with a contact hole for exposing the source electrode and the drain electrode, a first pixel electrode formed on the first insulating layer and electrically

connected to any one electrode of the source electrode and the drain electrode, a power supply element formed on the first insulating layer and electrically coupled to another electrode of the source electrode and the drain electrode through the contact hole, a second insulating layer formed on the insulating substrate equipped with the first pixel electrode and the power supply element and equipped with a via hole for exposing a part of the first pixel electrode, and a second pixel electrode formed on the second insulating layer and electrically coupled to the first pixel electrode through the via hole.

[0016] In a further exemplary embodiment of the present invention, the power supply element may be formed on a layer different from the gate lines and the data lines.

[0017] Furthermore, an insulating layer may be interposed between the reflective film and the power supply element so that the reflective film and the power supply element are electrically separated from each other.

[0018] Furthermore, an insulating layer may be interposed between the first pixel electrode and the power supply element in such a way that the first pixel electrode and the power supply element are electrically connected to each other through a via hole.

[0019] Furthermore, the power supply element and at least one of the reflective film and the first pixel electrode are formed of the same material, such as a metal having a low resistance. The reflective film and power supply element may have a thickness of a range between about 1,000 Å and about 5,000 Å.

[0020] Furthermore, the power supply element may be formed in a linear or in a grid structure.

[0021] Furthermore, the first insulating layer may be a passivation layer, the second insulating layer may be a planarized film, the second insulating layer may be formed of a transparent organic material, such as, for example, acryl, PI, PA, BCB or similar material, and the second insulating layer may have a thickness of a range of between about 1 μm to about 2 μm.

#### BRIEF DESCRIPTION OF THE DRAWINGS

[0022] The above and other features and advantages of the present invention will become more apparent to those of ordinary skill in the art by describing in detail exemplary embodiments thereof with reference to the attached drawings.

[0023] FIG. 1 is a cross sectional view illustrating a conventional organic electroluminescent display device.

[0024] FIG. 2A is a plane figure of an organic electroluminescent display device according to one embodiment of the present invention.

[0025] FIG. 2B is a cross sectional view of an organic electroluminescent display device taken along the line II B-II B of FIG. 2A.

[0026] FIG. 3A, FIG. 3B, and FIG. 3C are plane figures illustrating a reflective film and power supply element according to embodiments of the present invention.

[0027] FIG. 4A is a plane figure of an organic electroluminescent display device according to another embodiment of the present invention.

[0028] FIG. 4B is a cross sectional view of an organic electroluminescent display device taken along the line IVB-IVB of FIG. 4A.

[0029] FIG. 5A, FIG. 5B, and FIG. 5C are plane figures for illustrating a first pixel electrode and power supply element according to preferred embodiments of the present invention.

#### DETAILED DESCRIPTION OF THE INVENTION

[0030] The present invention will now be described in detail in connection with exemplary embodiments with reference to the accompanying drawings. For reference, like reference characters designate corresponding parts throughout several views.

[0031] FIG. 2A illustrates a planar structure of an organic electroluminescent display device according to an exemplary embodiment of the present invention, and FIG. 2B illustrates cross sectional structure of the organic electroluminescent display device. FIG. 2B illustrates a driving thin film transistor, an electroluminescent (EL) device and a capacitor in pixels in the cross sectional structure of an organic electroluminescent display device taken along the line II b-II b of FIG. 2A.

[0032] Referring to FIG. 2A and FIG. 2B, an active matrix organic electroluminescent display device according to an exemplary embodiment comprises a plurality of gate lines 210 formed on an insulating substrate 200, a plurality of data lines 220 formed on the insulating substrate 200 so that the data lines 220 and the gate lines 210 cross each other, a power supply element 230 for supplying a common power supply, and a plurality of pixels connected to the signal lines 210, 220 and the power supply element 230.

[0033] Each of the pixel comprises a switching thin film transistor 270 connected to the gate lines 210 and data lines 220, a capacitor 240 connected to the power supply element 230 through via hole 259, and a driving thin film transistor 250 and an EL device 260 connected to the power supply element 230 through the via hole 259.

[0034] An upper electrode 246 and a lower electrode 244 of the capacitor 240 are formed in an island shape at upper and lower parts of an interlayer insulating layer 255 respectively. The lower electrode 244 of the capacitor 240 is connected to gate electrode 254 of the driving thin film transistor 250 and connected to any one of the source electrode 273a and the drain electrode 273b of the switching thin film transistor 270. For example, the lower electrode 244 is connected to the source electrode 273a through contact hole 274. The upper electrode 246 of the capacitor 240 is connected to the power supply element 230 through the via hole 259. A reflective film 261 of the EL device 260 is formed on the same layer as the power supply element 230, such as, for example, on first insulating layer 257, and is insulated from other layers by second insulating layer 262.

[0035] A pixel electrode 263 of the EL device is formed on the second insulating layer 262 in such a way that the pixel electrode 263 is coupled to any one electrode of source electrode 256a and the drain electrode 256b of the driving thin film transistor 250. For example, the pixel electrode may be connected to the drain electrode 256b through via hole 258. An insulating layer formed of an interlayer insu-

lating layer **255** may be interposed between the gate lines **210** and the data lines **220** so that the gate lines **210** and the data lines **220** are electrically separated from each other. An insulating layer, formed of first insulating layer **257** and gate insulating layer **253**, is interposed between the power supply elements **230** so that the power supply elements **230** are electrically separated from the gate lines **210** and data lines **220**. Therefore, the power supply elements **230** are formed on the same layer as the reflective film **261**, that is, formed on the first insulating layer **257**. The power supply elements **230** are formed on layers different from the gate lines **210** or data lines **220** so that an in-line short may be prevented.

[0036] A method for fabricating an organic electroluminescent display device of the present invention having the foregoing structure is described as follows.

[0037] An activation layer **252** formed of polysilicon film is formed on a buffer layer **251** formed on insulating substrate **200**. A gate electrode **250** is formed by forming a gate insulating layer **253** on the buffer layer **251** and on the activation layer **252**, depositing gate metal on the gate insulating layer **253** and patterning the gate metal after forming the activation layer **252**. Source and drain regions **252a**, **252b** are formed by injecting certain impurities into the gate electrode **254**, using the gate electrode **254** as a mask after forming the gate electrode **254**.

[0038] Contact holes **255a**, **255b** for exposing a part of the source region **252a** and the drain region **252b** are formed by depositing an interlayer insulating layer **255** on the source and drain regions **252a**, **252b** and patterning the interlayer insulating layer **255** after forming the source and drain regions **252a**, **252b**.

[0039] A thin film transistor comprising an activation layer **252**, a gate electrode **254** and source and drain electrodes **256a**, **256b** is formed by depositing a metallic material on the front side of the insulating substrate **200** and patterning the metallic material, thereby forming source and drain electrodes **256a**, **256b** electrically connected to the source and drain regions **252a**, **252b** through the contact holes **255a**, **255b**, after forming the contact holes **255a**, **255b**.

[0040] A via hole **259** for exposing a part of any one electrode of the source and drain electrodes **256a**, **256b**, such as, for example, the source electrode **256a**, is formed by forming a first insulating layer **257** on the front side of the insulating substrate **200**, including on the thin film transistor, and etching the first insulating layer **257**, wherein the first insulating layer **257** is formed using an inorganic material such as, for example, SiNx, SiO<sub>2</sub> or similar material and functions as a passivation layer.

[0041] A reflective film **261**, for playing a role in reflecting light emitted from an organic emitting layer to be formed afterward, and a power supply element **230**, electrically coupled to the source electrode **256a** through the via hole **259**, are formed at the same time by depositing a metallic material having a lower resistance and superior reflectivity on the front side of the insulating substrate **200** and patterning the metallic material after forming the via hole **259**. The reflective film **261** and the power supply element **230** may be formed of a metal having superior reflectivity and lower resistance. For example, the reflective film **261** and the power supply element **230** may be formed of a metal such as Al, Ag or similar material. Furthermore, the reflective film

**261** and power supply element **230** may have a thickness of a range of about 1,000 Å to about 5,000 Å.

[0042] A via hole **258** for exposing a part of another electrode of the source and drain electrodes **256a**, **256b**, such as, for example, the drain electrode **256b**, is formed on the second insulating layer **262** by forming a second insulating layer **262** on the front side of the insulating substrate **200** and patterning the second insulating layer **262**, after simultaneously forming the reflective film **261** and the power supply element **230**. The second insulating layer **262** may function as a planarization layer and may be formed of a material such as, for example, acryl, PI (polyimide), PA (polyamide), BCB (benzocyclobutene) or similar material that is transparent and has fluidity, so that the material is capable of planarizing the lower structure by relieving winding of a lower structure. The second insulating layer **262** may be deposited to a thickness of a range of about 1 μm to about 2 μm to provide sufficient planarization and transmittance of light emitted from an organic emitting layer to be formed afterward.

[0043] A pixel electrode **263** electrically coupled to another of the source and drain electrodes **256a**, **256b** is formed by depositing a transparent conductive material, such as, for example, ITO, IZO, or similar material on the front side of the insulating substrate **200** and patterning the transparent conductive material after forming the via hole **258**.

[0044] An EL device **260** may be formed by forming a pixel defining film **264**, an organic emitting layer **265** and a cathode electrode **266** equipped with an opening part **269** for exposing a part of the pixel electrode on the pixel electrode **263** after forming the pixel electrode **263**.

[0045] A front emitting type organic electroluminescent display device is formed by sealing the insulating substrate **200** using a sealing substrate, after forming the EL device **260**, although the sealing substrate is not illustrated in the figures.

[0046] FIG. 3A, FIG. 3B and FIG. 3C illustrate a planar structure of a reflective film **361** and a power supply element **330** according to exemplary embodiments of the present invention.

[0047] In FIG. 3A, the reflective film **361** is formed such that the reflective film **361** is included in an island shape inside respective grids of the power supply element **330**. A voltage drop effect through the power supply element **330** is suppressed, since the power supply voltage (V<sub>dd</sub>) is impressed from four directions if the power supply element **330** is formed in a grid shape as described above.

[0048] Furthermore, the island shape reflective films **361** may be arranged in a matrix shape of rows and columns, and the power supply element **330** is formed in a line shape between adjacent reflective films **361** arranged in a column direction, as illustrated in FIG. 3B.

[0049] Also, the power supply element **330** may be formed in a line direction between the island shape adjacent reflective films **361** arranged in a matrix shape of rows and columns, as illustrated in FIG. 3C.

[0050] FIG. 4A illustrates a planar structure of an organic electroluminescent display device according to another exemplary embodiment of the present invention, and FIG.

**4B** illustrates a cross sectional structure of the organic electroluminescent display device. **FIG. 4B**, illustrates a cross sectional structure of an organic electroluminescent display device, taken along the line IV-IV of **FIG. 4A**, which includes a driving thin film transistor, an EL device and a capacitor in pixels.

[0051] An active matrix organic electroluminescent display device illustrated in **FIG. 4A** and **FIG. 4B** may be structurally similar to an active matrix organic electroluminescent display device of the exemplary embodiment described above, except that the reflective film and the pixel electrode are electrically connected to each other. The active matrix organic electroluminescent display device illustrated in **FIG. 4A** and **FIG. 4B** comprises a reflection type first pixel electrode **461** and a transmission type second pixel electrode **464**. The reflection type first pixel electrode **461** is connected to source and drain electrodes **456a**, **456b** of the lower side.

[0052] That is, first pixel electrode **461** of an EL device **460** is formed on the same layer as a power supply element **430**, such as, for example, first insulating layer **457**. The first pixel electrode **461** is connected to any one electrode of the source and drain electrodes **456a**, **456b** of the driving transistor, such as, for example, the drain electrode **456b**, through contact hole **458** of the first insulating layer in an active matrix organic electroluminescent display device according to an exemplary embodiment of the invention, as illustrated in **FIG. 4A** and **FIG. 4B**.

[0053] Furthermore, a second pixel electrode **464** of the EL device is formed on a second insulating layer **462** so that the second pixel electrode **464** is electrically connected to first pixel electrode **461** through via hole **463**.

[0054] **FIG. 5A**, **FIG. 5B**, and **FIG. 5C** illustrate a planar structure of first pixel electrodes **561** and a power supply element **530** according to an exemplary embodiment of the present invention.

[0055] In **FIG. 5A**, the first pixel electrodes **561** are formed such that the first pixel electrodes **561** are included in an island shape inside respective grids of the power supply element **530**, and the power supply element **530** is formed in a grid shape.

[0056] Furthermore, the island shape first pixel electrodes **561** may be formed in a matrix shape of rows and columns, and the power supply element **530** is formed in a line shape between adjacent first pixel electrodes **561** arranged in a column or row direction, as illustrated in **FIG. 5B** and **FIG. 5C**.

[0057] As described above, an in-line short problem between the gate and data lines and the power supply elements may be solved or reduced by simultaneously forming the power supply elements **230** and a reflective film **261** or a first pixel electrode **461**. Furthermore, a voltage drop effect may be suppressed by using a lower resistance metal as the reflective film **261**, the first pixel electrode **461**, and/or the power supply element **230**.

[0058] Additionally, the width of the power supply element can be widened by reducing or solving the potential problem of an in-line short generated between the gate lines and the data lines.

[0059] According to the foregoing exemplary embodiments, the present invention may be capable of providing an organic electroluminescent display device for preventing short circuits between power supply elements or between the power supply elements and other adjacent lines by simultaneously forming the power supply elements together with a reflective film or a first pixel electrode.

[0060] Furthermore, the present invention is capable of providing an organic electroluminescent display device for suppressing a voltage drop effect by using a lower resistance metal as a material for a reflective film, a first pixel electrode and/or as the power supply elements.

[0061] While the invention has been particularly shown and described with reference to exemplary embodiments thereof, it will be understood by those skilled in the art that changes in form and details may be made to the foregoing without departing from the spirit and scope of the invention.

What is claimed is:

1. An organic electroluminescent display device, comprising:

a plurality of gate lines, a plurality of data lines and a power supply element formed on an insulating substrate;

a pixel region formed by the plurality of gate lines, the plurality of data lines and the power supply element; and

pixels arranged on the pixel region, and the pixels comprising a reflective film and a pixel electrode,

wherein the reflective film is formed on a same layer as the power supply element.

2. The organic electroluminescent display device according to claim 1, wherein the power supply element is formed on a layer different from the plurality of gate lines and the plurality of data lines.

3. The organic electroluminescent display device according to claim 1, wherein the reflective film and the power supply element are formed of same material.

4. The organic electroluminescent display device according to claim 3, wherein the reflective film and the power supply element are formed of a material having a low resistance and a high reflectivity.

5. The organic electroluminescent display device according to claim 1, wherein an insulating layer is interposed between the reflective film and the pixel electrode so that the reflective film and the pixel electrode are electrically separated from each other.

6. The organic electroluminescent display device according to claim 5, wherein the insulating layer is formed of a transparent organic material.

7. The organic electroluminescent display device according to claim 6, wherein the transparent organic material is selected from the group consisting of acryl, PI, PA and BCB.

8. The organic electroluminescent display device according to claim 5, wherein the insulating layer has a thickness ranging from about 1  $\mu\text{m}$  to about 2  $\mu\text{m}$ .

9. The organic electroluminescent display device according to claim 1, wherein an insulating layer is interposed between the reflective film and the pixel electrode in such a way that the reflective film and the pixel electrode are electrically connected to each other through a via hole.

10. The organic electroluminescent display device according to claim 9, wherein the insulating layer is formed of a transparent organic material.

11. The organic electroluminescent display device according to claim 10, wherein the transparent organic material is selected from the group consisting of acryl, PI, PA and BCB.

12. The organic electroluminescent display device according to claim 9, wherein the insulating layer has a thickness ranging from about 1  $\mu\text{m}$  to about 2  $\mu\text{m}$ .

13. An organic electroluminescent display device, comprising:

a thin film transistor formed on an insulating substrate and having a source electrode and a drain electrode;

a first insulating layer formed on the insulating substrate and having at least one contact hole for exposing one of the source electrode and the drain electrode;

a reflective film formed on the first insulating layer;

a power supply element formed on the first insulating layer and electrically connected to one of the source electrode and the drain electrode through at least one contact hole;

a second insulating layer formed on the insulating substrate having the reflective film and the power supply element and having a via hole for exposing another of the source electrode and the drain electrode; and

a pixel electrode formed on the second insulating layer and electrically connected to another of the source electrode and the drain electrode through the via hole.

14. The organic electroluminescent display device according to claim 13, wherein the reflective film and power supply element are formed of a metal having a high reflectivity and a low resistance.

15. The organic electroluminescent display device according to claim 13, wherein the power supply element is formed in a linear structure.

16. The organic electroluminescent display device according to claim 13, wherein the power supply element is formed in a grid structure.

17. The organic electroluminescent display device according to claim 13, wherein the first insulating layer is a passivation layer, and the second insulating layer is a planarized film.

18. The organic electroluminescent display device according to claim 13, wherein the second insulating layer has a thickness ranging from about 1  $\mu\text{m}$  to about 2  $\mu\text{m}$ .

19. An organic electroluminescent display device, comprising:

a thin film transistor formed on an insulating substrate and having a source electrode and a drain electrode;

a first insulating layer formed on the insulating substrate and having at least one contact hole for exposing at least one of the source electrode and the drain electrode;

a first pixel electrode formed on the first insulating layer and electrically connected to one of the source electrode and the drain electrode;

a power supply element formed on the first insulating layer and electrically connected to another of the source electrode and the drain electrode through the contact hole;

a second insulating layer formed on the insulating substrate having the first pixel electrode and the power supply element, and having a via hole for exposing a part of the first pixel electrode; and

a second pixel electrode formed on the second insulating layer and electrically connected to the first pixel electrode through the via hole.

20. The organic electroluminescent display device according to claim 19, wherein the reflective film and the power supply element are formed of a metal having a high reflectivity and a lower resistance.

21. The organic electroluminescent display device according to claim 19, wherein the power supply element is formed in a linear structure.

22. The organic electroluminescent display device according to claim 19, wherein the power supply element is formed in a grid structure.

23. The organic electroluminescent display device according to claim 19, wherein the first insulating layer is a passivation layer, and the second insulating layer is a planarized film.

24. The organic electroluminescent display device according to claim 19, wherein the second insulating layer has a thickness ranging from about 1  $\mu\text{m}$  to about 2  $\mu\text{m}$ .

\* \* \* \* \*

专利名称(译)	有机电致发光显示装置		
公开(公告)号	<a href="#">US20050057460A1</a>	公开(公告)日	2005-03-17
申请号	US10/922915	申请日	2004-08-23
[标]申请(专利权)人(译)	李宪JUNG KOO JAE BON 朴相IL		
申请(专利权)人(译)	李宪JUNG KOO JAE-BON 朴相IL		
当前申请(专利权)人(译)	三星DISPLAY CO. , LTD.		
[标]发明人	LEE HUN JUNG KOO JAE BON PARK SANG IL		
发明人	LEE, HUN-JUNG KOO, JAE-BON PARK, SANG-IL		
IPC分类号	H01L51/50 G09F9/30 G09G3/30 H01L27/32 H01L29/786 H05B33/08 H05B33/12 H05B33/14 H05B33/22 H05B33/26		
CPC分类号	H01L27/3248 H01L27/3258 H01L2251/5315 H01L51/5271 H01L27/3279		
优先权	1020030058871 2003-08-25 KR		
其他公开文献	US8130174		
外部链接	<a href="#">Espacenet</a> <a href="#">USPTO</a>		

#### 摘要(译)

有机电致发光显示装置技术领域本发明涉及一种有机电致发光显示装置，其通过使用低电阻金属同时形成反射膜和电源元件来防止电源元件之间的电压降和短路。本发明提供一种有机电致发光显示装置，包括栅极线，数据线和形成在绝缘基板上的电源元件，受栅极线限制的像素区域，数据线和电源元件，以及布置在像素区域上的像素包括反射膜和像素电极，其中反射膜形成在与电源元件相同的层上。

